

# The 10 Essential Public Health Services in Action

## Job Aid



LOCAL PUBLIC HEALTH  
INSTITUTE OF MASSACHUSETTS

### What are the three core functions of public health?

1

The three core functions of public health are:

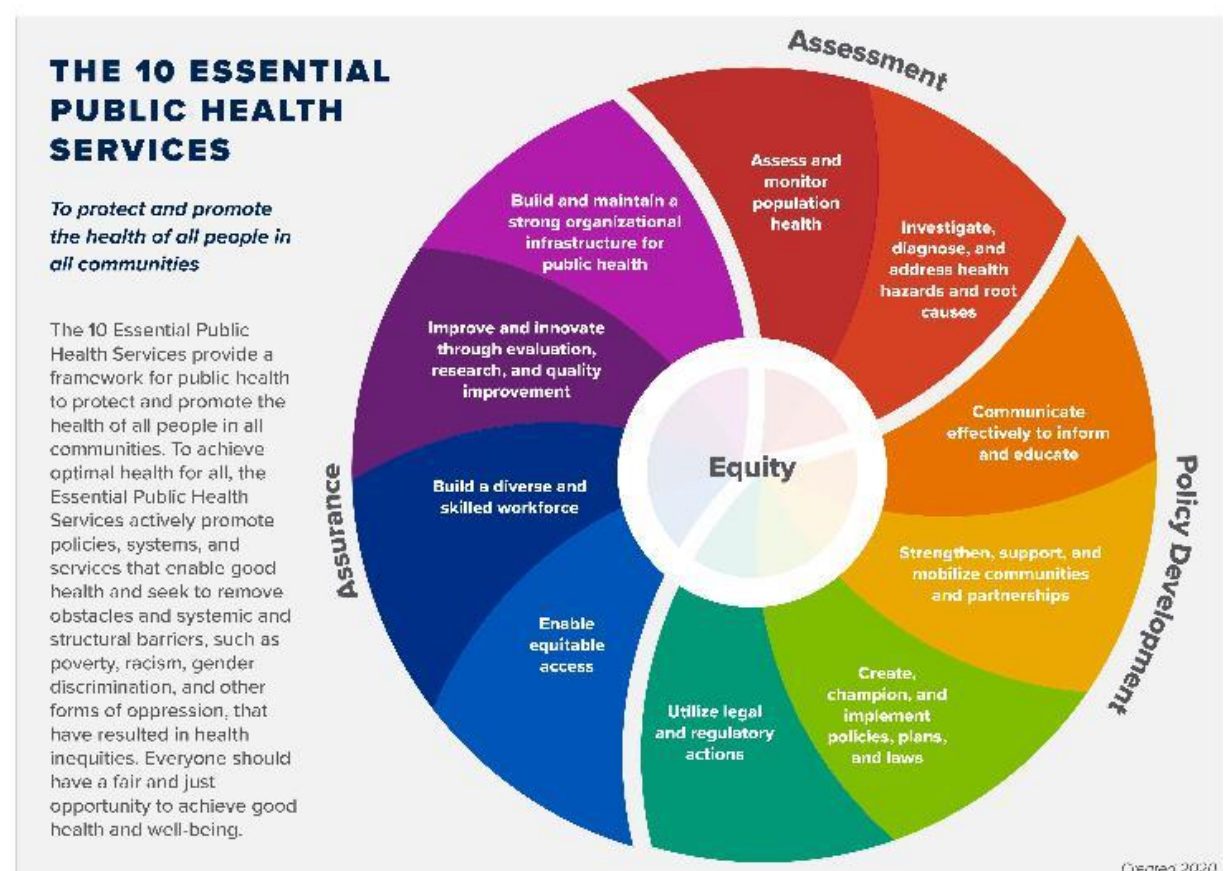
1. Assessment – finding out what the problem is
2. Policy development – doing something about it
3. Assurance – evaluating whether or not it worked

### What are the 10 Essential Public Health Services (EPHS)?

2

The 10 Essential Public Health Services (EPHS) provide a framework for public health to protect and promote the health of all people in all communities. To achieve equity, the EPHS actively promote policies, systems, and overall community conditions that enable optimal health for all, and seek to remove systemic and structural barriers that have resulted in health inequities. Such barriers include poverty, racism, gender discrimination, ableism, and other forms of oppression. Everyone should have a fair and just opportunity to achieve optimal health and well being.

The EPHS framework, originally released in 1994, was recently updated in September 2020 to reflect the dramatic shift in the public health landscape over the past 25 years. The updated framework has an increased focus on equity and is more in line with current and future public health practice.



The 10 EPHS are:

- EPHS 1 – Assess and monitor population health status, factors that influence health, and community needs and assets
- EPHS 2 – Investigate, diagnose, and address health problems and hazards affecting the population
- EPHS 3 – Communicate effectively to inform and educate people about health, factors that influence it, and how to improve it
- EPHS 4 – Strengthen, support, and mobilize communities and partnerships to improve health
- EPHS 5 – Create, champion, and implement policies, plans, and laws that impact health
- EPHS 6 – Utilize legal and regulatory actions designed to improve and protect the public's health
- EPHS 7 – Assure an effective system that enables equitable access to the individual services and care needed to be healthy
- EPHS 8 – Build and support a diverse and skilled public health workforce
- EPHS 9 – Improve and innovate public health functions through ongoing evaluation, research, and continuous quality improvement
- EPHS 10 – Build and maintain a strong organizational infrastructure for public health